



Company Profile

Takumi Information Technology Inc.

About Us



■ Head Office

11F, Ikebukuro DUPLEX B' s, Ikebukuro 2-40-13, Toshima-ku, Tokyo

- Tel: +81-3-5979-7381 ▪ FAX: +81-3-5979-7382
- URL: <https://www.takumi-it.co.jp/>

■ Osaka Office

10F, FPG links MIDOSUJI, 4-3-5 Awajimachi, Chuo-ku, Osaka-shi, Osaka

- Tel: +81-6-7177-0695

■ Establishment

Takumi Information Technology Company, Limited was established on March 27, 1997 and was located at 5F, Yushimaremie Building, Yushima 3-21-15, Bunkyo-ku, Tokyo

■ CEO

Koichi Sato

About Us

■ Business Description

Software Services

Manufacturing & Sale of Computer Peripherals

Information Technology Services

Temporary Staffing Services (authenticated on Jun 1,2008)

Software Distribution



■ Capital

10 million yen

■ Number of Employees

123 (109 permanent staff, 4 contract staff) *as of May 1, 2025

■ Revenue

1,063.91 million yen (28th term: Dec 2024)

History

| | |
|----------|--|
| 1997 Mar | Established as Takumi Information Technology Company, Limited in Yushima, Bunkyo-ku, Tokyo |
| 1999 Nov | Organizational changed to Takumi Information Technology Inc. |
| 2002 Jan | Acquired the license of Specified Temporary Staffing Services |
| 2008 Jun | <p>Aborted Specified Temporary Staffing Services</p> <p>Acquired the license of General Temporary Staffing Services (派13-303697)</p> |
| 2008 Sep | Moved to Ikebukuro, Toshima-ku, Tokyo |
| 2013 Dec | Acquired the ISMS Certification (ISO/IEC27001) |
| 2017 Nov | Joined Japan CRO Association as a supporting member |
| 2018 Sep | Acquired the license of Fee-Charging Employment Agency Services |



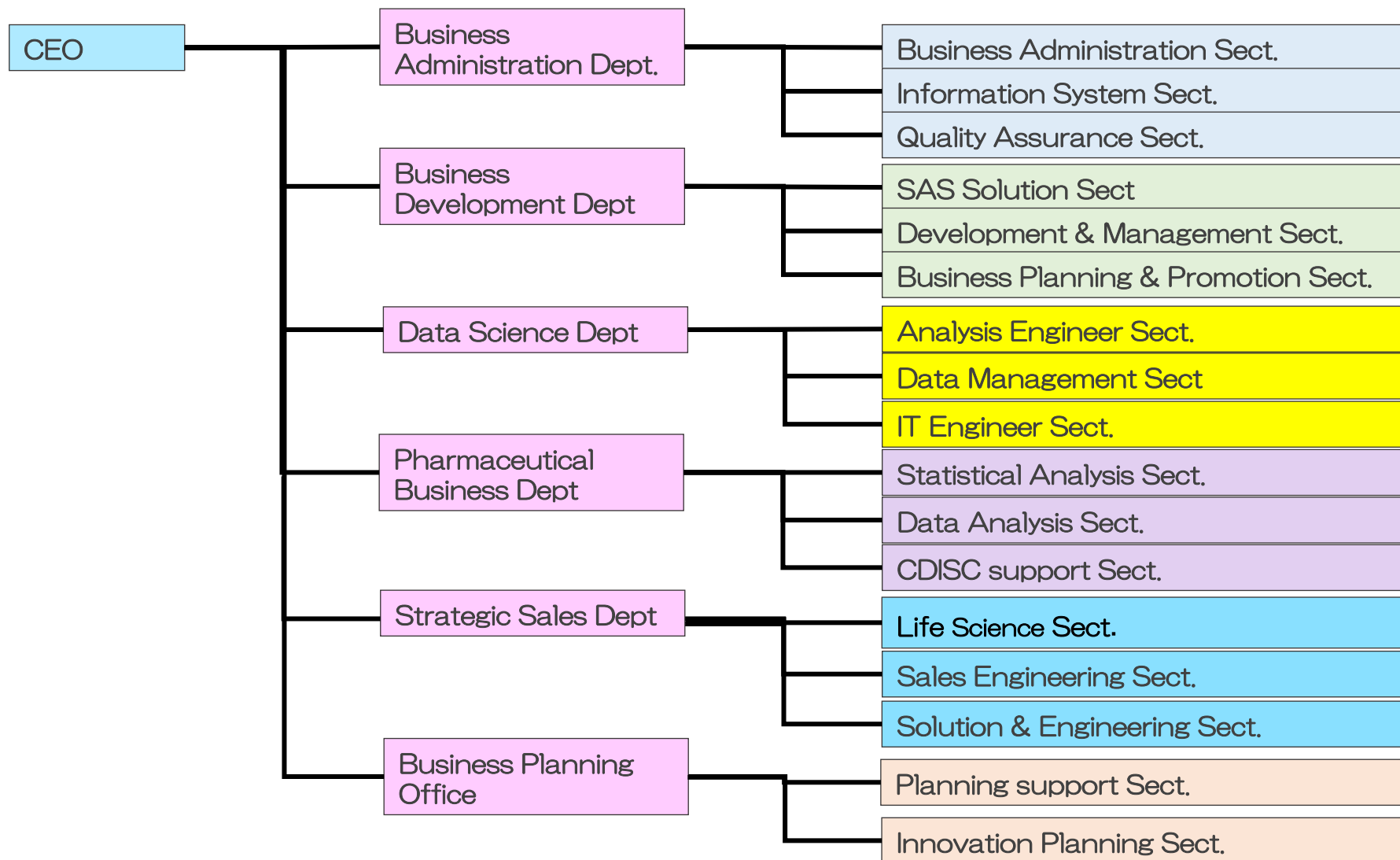
Affiliations

■ Supporting Member

- Japanese Society of Computational Statistics
- Japan CRO Association
- The Association of Clinical Evaluation
- Health Data Scientist Association
- Japanese Society for Biopharmaceutical Statistics

■ Regular Member

- CJUG (CDISC Japan User Group)
- PhUSE
- Japan Society of Clinical Trials and Research
- Pharma SUG
- The Japanese Society of Toxicology



Our Staff

■ Number of SAS Engineers : 99

| | |
|-------------------------------|------|
| System Engineer | : 70 |
| Consultant | : 14 |
| Statistical Analysis Engineer | : 15 |

■ Number of Experienced SAS Trainer

| | |
|-------------------------------|-----|
| Programming related training | : 5 |
| Statistical Analysis training | : 3 |
| SAS BI training | : 3 |

Our Staff

■ Number of SAS Certified Professionals

SAS Base Programming 8,9: 75

SAS Advanced Programming: 26

SAS BI Content Development: 2

SAS Data Integration Development: 2

SAS Platform Administration 9: 2

SAS Clinical Trials: 17

SAS Statistical Business Analyst Using SAS 9: 2

※As of June 2024

Our Clients

■ Our Clients (the previous five years) :

Medical/Pharmaceutical : 58 (Pharmaceutical : 33, CRO : 25)

Financial Services : 8 (Banking : 2, Insurance : 5, Credit Card : 1)

Government : 3 (National Facility : 2, Local Govt. : 1)

Manufacturing/Distribution : 9 (Manufacturing : 8, Distribution : 1)

Information & Communications : 20

Education/Hospital : 19 (University : 14, Hospital : 5)

Others : 16

Services

Support for Drug Development

CDISC Consulting Services and Solutions

Leveraging our extensive expertise, we provide high-quality services across all stages of drug development—from comprehensive clinical trials to investigator-initiated studies—with flexible support tailored to your needs.

**Non-Clinical
Studies**



**Clinical
Development**



**Post-Marketing
Surveillance**



Services – Drug Development

Non-Clinical Services



Business Services

- SEND Creation Support
- SEND Data Quality Checking
- Statistical Analysis & Consultation

IT Services

| | | |
|--------|-----------------|---|
| Takumi | XPT Compare | : Support editing and checking of SEND data |
| Takumi | Stat PreClinica | : Perform statistical analysis with simple mouse clicks |
| Takumi | SENDVT | : JMP Add-in Tool for Visualizing SEND Data |
| | JMP | : Add-on development support services |
| | nQuery | : Typical software for sample size determination |
| | solas | : Software for simulation of missing data |

Services – Drug Development

Clinical Development



Business Services

- Data Management
- CDISC Electronic Application Support Service
- CDISC Consulting Service
- Statistical Analysis
- EDC Development & Operations

IT Services

Takumi

- | | |
|---------------------|--|
| Takumi Macro Series | : Support report creations |
| Viedoc | : EDC used in any clinical trial areas & phases |
| JMP | : Add-on development support services |
| nQuery | : Typical software for sample size determination |
| solas | : Software for simulation of missing data |

Services – Drug Development

Post-Marketing Surveillance



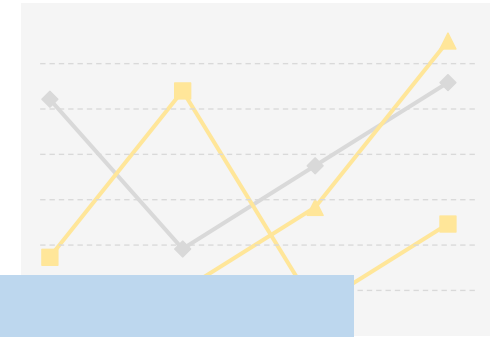
Business Services

- Data Management (Clinical Trial / Post Marketing)
- Electronic Data Capture (EDC) system development and operation
- Statistical Analysis

IT Services

| | | |
|---------------|---------------------|--|
| Takumi | Takumi Macro Series | : Support report creations |
| | Viedoc | : EDC used in any clinical trial areas & phases |
| | JMP | : Add-on development support services |
| | nQuery | : Typical software for sample size determination |
| | solas | : Software for simulation of missing data |

Services – Drug Development



Database Research

Business Services

Statistical Analysis (DB:MDV, JMDC, various RWD)

IT Services

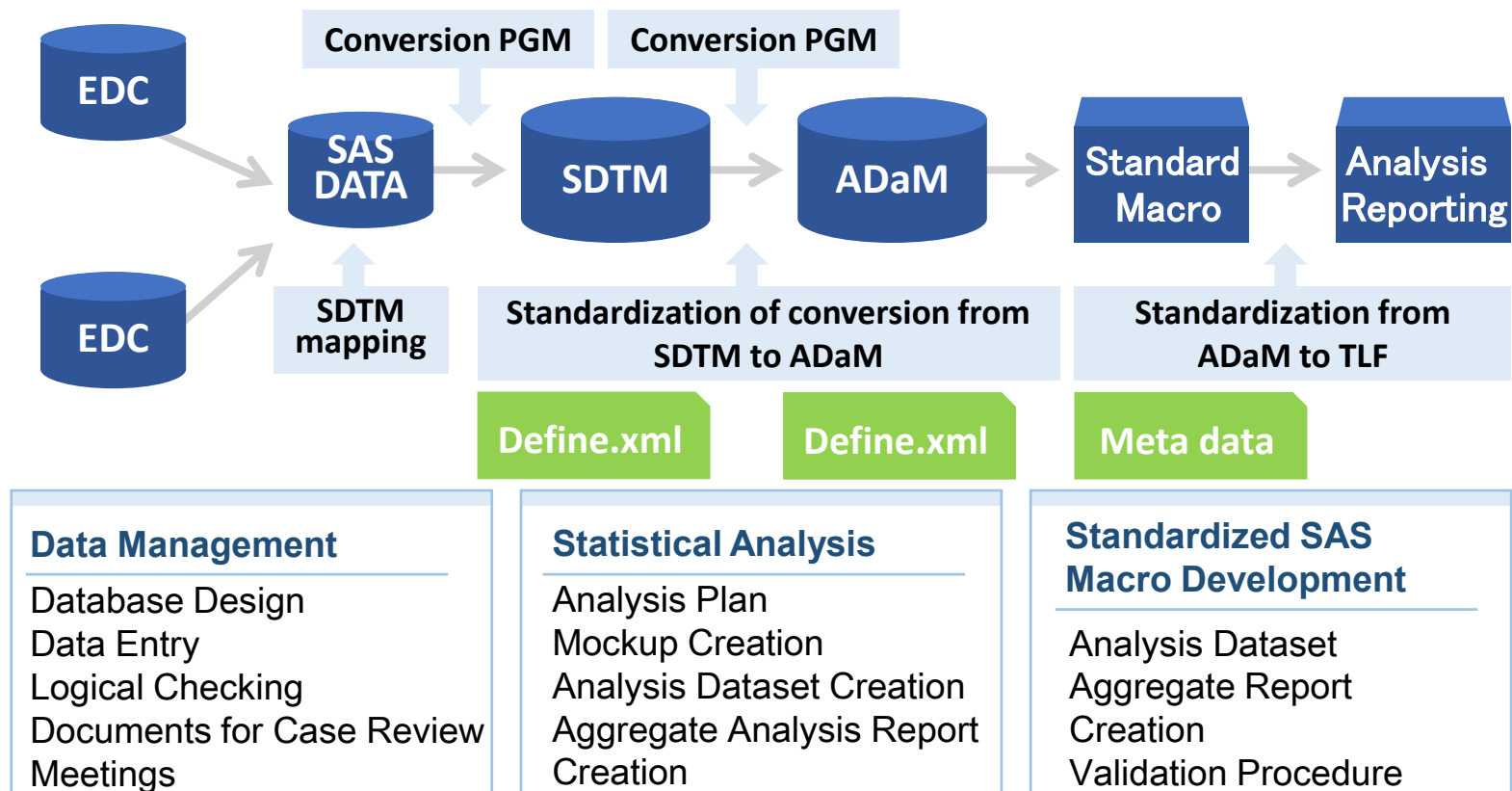
Takumi Takumi Macro Series : Support report creations

Collaborative Support Services

In partnership with CLINICAL STUDY SUPPORT Co., Ltd., we offer a one-stop solution for database research utilizing real-world data—covering research planning, statistical analysis, medical writing, and manuscript submission.

Services – Drug Development

CDISC Standards



Services – Packaged Software / Software Distribution

XPT Compare

Takumi



A tool for handling non-clinical data. It converts CDISC SEND-format XPORT files to CSV or Excel, allows format and value edits directly in Excel, and maintains an audit trail of all changes.

Stat Preclinica

Takumi

非臨床業務向け統計解析ツール
Stat Preclinica

A statistical analysis tool with 89 types of statistical analysis and test methods for handling non-clinical data. It features a user-friendly interface, of which data can be input simply by copy & paste from EXCEL.

Services – Packaged Software / Software Distribution

SENDVT

Takumi



A JMP add-in tool that provides mouse-based functionality for processing, statistical analysis, and visualization of continuous variables in CDISC SEND datasets.

Services – Packaged Software / Software Distribution

Takumi Macro Series

Takumi

TMS

A series of tools for facilitating the process of creating reports from raw data in pharmaceutical-related operations.

- **TMS-aCRF Maker** : Create Annotated CRF in just 3 steps
- **TMS-RTF Standard** : Standardize the output style of analysis reports in RTF format
- **TMS-Check Diff** : Improve efficiency in reports comparison

Viedoc



Viedoc is an EDC with a track record of achieving more than 700 studies in over 60 countries around the world.

Services – Packaged Software / Software Distribution

nQuery



Enables quick and easy sample size calculation for statistical analysis.

solas



It imputes missing values in 6 ways, processes data and displays merges. It is equipped with multi-imputation method based on the research of Professor Donald B. Rubin, and supports SAS, SPSS, etc. file formats.

Services

IT Solutions

Data Mining × Big Data × System Construction

Extract and utilize necessary information from big data,
Support our clients to develop the future of business

Banking / Finance / Insurance

Manufacturing / Distribution

Information / Communications

Medical / Civil Services / Others

Marketing Analysis

Market Trend Analysis

Anomaly Detection Logic

Operation Data Analysis

Consumer Behavior Analysis

Debt Collection Data Analysis

SAS Installation / System Migration

Demand Forecasting System Development

Mortgage Credit / Revenue Management

Reporting Application Development

Services – IT Solutions

What is best from the user's perspective?

With our strengths in statistical analysis and extensive experience in aggregate analysis of big data, we provide aggregate analysis system to perform data analysis through advanced analysis methods. By analyzing the latest data on market changes with high accuracy, we provide solutions for you to make quick decisions.

Marketing
/
Market
Analysis

System
Development

Migration
Service

Consulting

Services – IT Solutions

Achievements by Industry



Banking / Finance / Insurance

- Card data DWH construction & data analysis system
- Campaign information aggregation analysis system construction
- Operation model construction system
- DWH analysis system construction
- Marketing analysis system construction
- SAS BI environment construction & DM aggregation analysis system construction
- SAS BI Server related installation
- Data / program migration from SAS V8 to SAS V9
- SAS programming consulting

.

Services – IT Solutions

Achievements by Industry



Manufacturing / Distribution

- Marketing data analysis system development
- Operation of survey data analysis system operation
- Distribution data analysis system
- Operation of marketing data analysis system
- Sales data DWH construction / aggregation analysis system operation
- SAS performance tuning
- Application / system migration

.....

Services – IT Solutions

Achievements by Industry



Information / Communications

- Telemarketing analysis report creation
- DWH marketing analysis system construction

.

Medical / Civil Services / Others

- Operation of insurance information analysis system
- SAS BI Server related installation
- Data / program migration from SAS V8 to SAS V9
- Application / system migration
- SAS programming consulting
- SAS statistical analysis consulting
- Dispatch of SAS training instructors

.

Contact us



Takumi Information Technology Inc.

11F, Ikebukuro DUPLEX B's, Ikebukuro 2-40-13, Toshima-ku,
Tokyo

■ TEL +81 - 3 - 5979 - 7381

■ email: contact@takumi-it.co.jp

■ <https://www.takumi-it.co.jp>